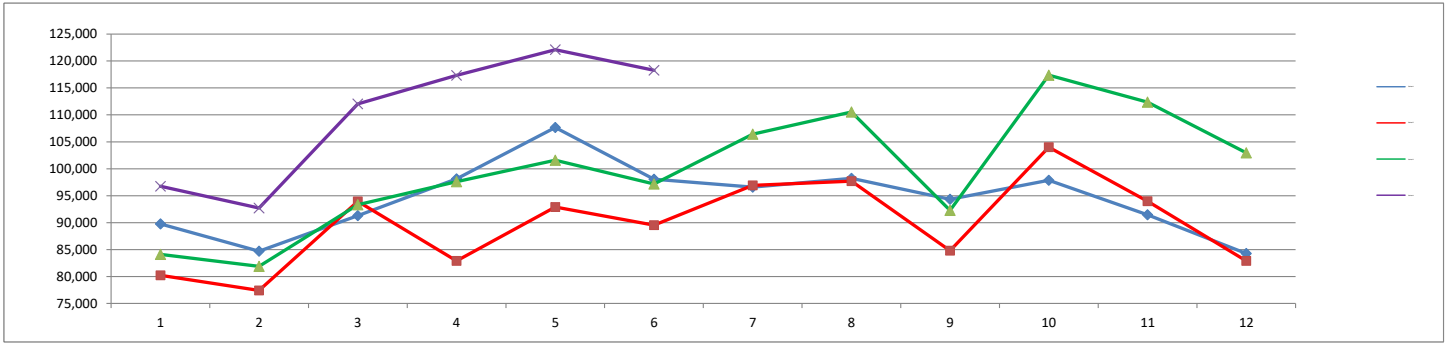


	Month			Year-to-Date		
	Jun-19	Jun-18	% Change	2019	2018	% Change
<b>ENPLANED PASSENGERS</b>						
AMERICAN EAGLE	27,733	20,577	34.78%	150,184	115,917	29.56%
UNITED EXPRESS	7,720	6,207	24.38%	47,515	40,050	18.64%
DELTA	23,715	20,864	13.66%	129,477	118,831	8.96%
VIA AIR	0	0	0.00%	113	0	100.00%
<b>Enplaned Passenger Total</b>	<b>59,168</b>	<b>47,648</b>	<b>24.18%</b>	<b>327,289</b>	<b>274,798</b>	<b>19.10%</b>
<b>LANDED WEIGHT (1,000 LB UNITS)</b>						
AMERICAN EAGLE	31,734	24,037	32.02%	187,022	137,657	35.86%
UNITED EXPRESS	8,588	7,264	18.23%	58,689	49,879	17.66%
DELTA	38,090	24,275	56.91%	161,846	141,916	14.04%
VIA AIR	0	0	0.00%	367	0	100.00%
<b>Subtotal</b>	<b>78,412</b>	<b>55,576</b>	<b>41.09%</b>	<b>407,924</b>	<b>329,452</b>	<b>23.82%</b>
MOUNTAIN AIR CARGO	1,338	804	66.42%	8,306	4,732	75.53%
FEDERAL EXPRESS	6,679	8,118	-17.73%	46,675	46,134	1.17%
UNITED PARCEL SERVICE	24,971	23,308	7.13%	157,615	134,977	16.77%
MARTINAIRE	170	179	-5.03%	1,038	1,098	-5.46%
AIR CARGO CARRIERS	1,462	1,566	-6.64%	9,553	9,840	-2.92%
<b>Subtotal</b>	<b>34,620</b>	<b>33,975</b>	<b>1.90%</b>	<b>223,187</b>	<b>196,781</b>	<b>13.42%</b>
<b>Landed Weight Total</b>	<b>113,032</b>	<b>89,551</b>	<b>26.22%</b>	<b>631,111</b>	<b>526,233</b>	<b>19.93%</b>
<b>LANDINGS</b>						
AMERICAN EAGLE	494	375	-98.44%	2,738	2,437	12.35%
UNITED EXPRESS	183	157	-97.87%	1,259	1,078	16.79%
DELTA	283	245	-99.26%	1,652	1,494	10.58%
VIA AIR	0	0	0.00%	10	0	100.00%
<b>Subtotal</b>	<b>960</b>	<b>777</b>	<b>23.55%</b>	<b>5,659</b>	<b>5,009</b>	<b>12.98%</b>
MOUNTAIN AIR CARGO	37	23	-97.23%	236	131	80.15%
FEDERAL EXPRESS	22	41	-99.67%	224	233	-3.86%
UNITED PARCEL SERVICE	72	79	-99.71%	460	481	-4.37%
MARTINAIRE	20	21	-88.24%	122	129	-5.43%
AIR CARGO CARRIERS	56	60	-96.17%	366	377	-2.92%
<b>Subtotal</b>	<b>207</b>	<b>224</b>	<b>-7.59%</b>	<b>1,408</b>	<b>1,351</b>	<b>4.22%</b>
<b>Landings Total</b>	<b>1,167</b>	<b>1,001</b>	<b>16.58%</b>	<b>7,067</b>	<b>6,360</b>	<b>11.12%</b>
<b>ENPLANED FREIGHT / CARGO</b>						
DELTA	3	4	-25.00%	24	32	-25.00%
MOUNTAIN AIR CARGO	105	77	36.36%	662	425	55.76%
FEDERAL EXPRESS	532	623	-14.61%	3,073	3,451	-10.95%
UNITED PARCEL SERVICE	2,160	1,889	14.35%	11,693	11,013	6.17%
MARTINAIRE	10	8	25.00%	58	50	16.00%
AIR CARGO CARRIERS	101	102	-0.98%	557	553	0.72%
<b>Enplaned Cargo Total</b>	<b>2,911</b>	<b>2,703</b>	<b>7.70%</b>	<b>16,067</b>	<b>15,524</b>	<b>3.50%</b>



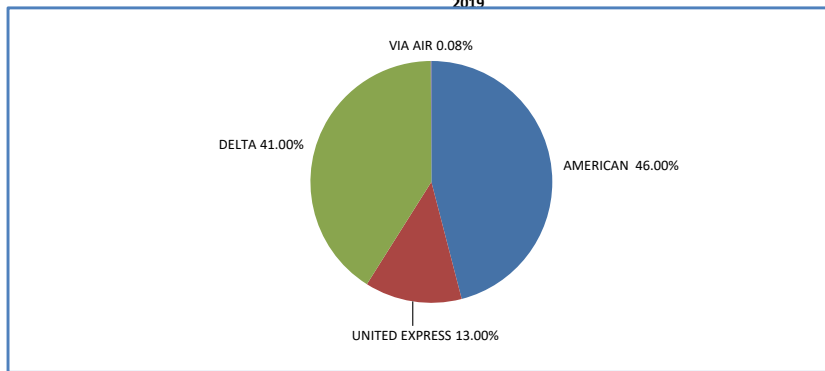
**MONTHLY TOTAL PASSENGERS  
2016 - 2019**



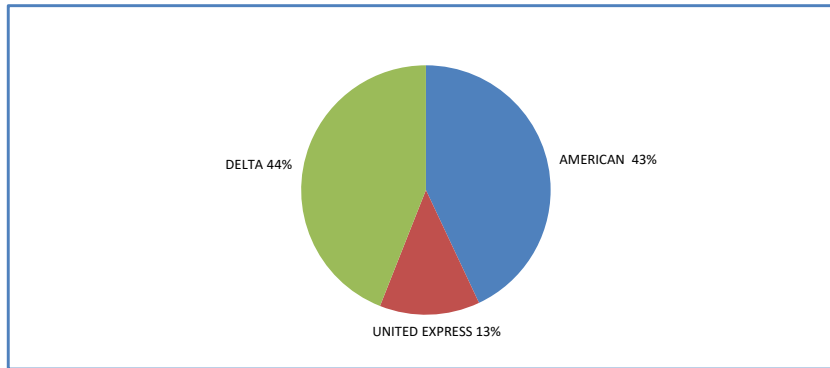
	Jan	Feb	Mar	Apr	May	Jun	Jul	Aug	Sep	Oct	Nov	Dec	Grand Total
2016	89,773	84,708	91,287	98,123	107,658	98,060	96,588	98,214	94,336	97,870	91,444	84,268	1,132,329
2017	80,220	77,410	93,946	82,905	92,892	89,533	96,902	97,701	84,799	104,000	93,983	82,897	1,077,188
2018	84,101	81,880	93,305	97,590	101,597	97,177	106,432	110,532	92,275	117,377	112,364	102,973	1,197,603
2019	96,756	92,705	112,048	117,331	122,099	118,289							659,228

**YEAR - TO - DATE MARKET SHARE BY CARRIER**

**2019**



**2018**



**2017**

