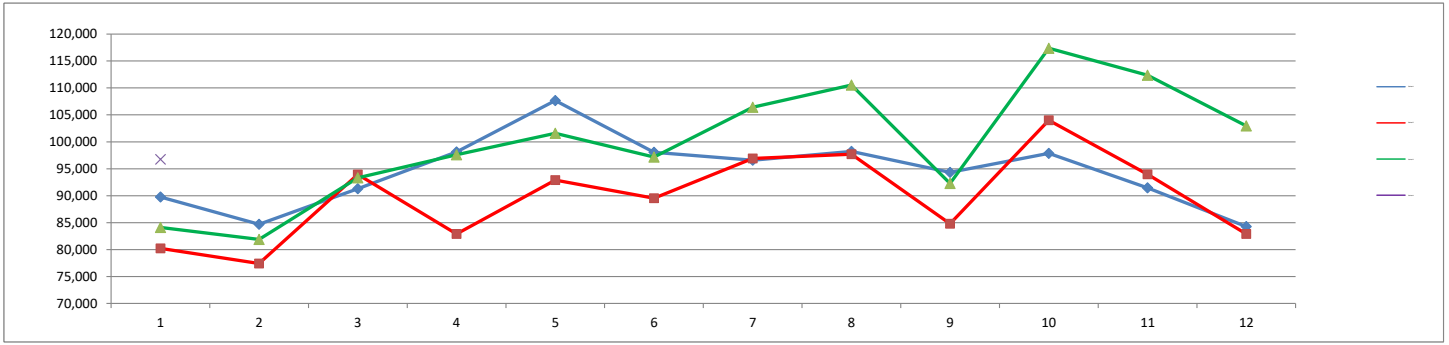


	Month			Year-to-Date		
	Jan-19	Jan-18	% Change	2019	2018	% Change
<b>ENPLANED PASSENGERS</b>						
AMERICAN EAGLE	21,001	16,800	25.01%	21,001	16,800	25.01%
UNITED EXPRESS	6,873	6,189	11.05%	6,873	6,189	11.05%
DELTA	18,835	17,535	7.41%	18,835	17,535	7.41%
VIA AIR	51	0	100.00%	51	0	100.00%
<b>Enplaned Passenger Total</b>	<b>46,760</b>	<b>40,524</b>	<b>15.39%</b>	<b>46,760</b>	<b>40,524</b>	<b>15.39%</b>
<b>LANDED WEIGHT (1,000 LB UNITS)</b>						
AMERICAN EAGLE	30,173	20,766	45.30%	30,173	20,766	45.30%
UNITED EXPRESS	10,889	8,675	25.52%	10,889	8,675	25.52%
DELTA	24,298	22,319	8.87%	24,298	22,319	8.87%
VIA AIR	191	0	100.00%	191	0	100.00%
<b>Subtotal</b>	<b>65,551</b>	<b>51,760</b>	<b>26.64%</b>	<b>65,551</b>	<b>51,760</b>	<b>26.64%</b>
MOUNTAIN AIR CARGO	1,500	796	88.44%	1,500	796	88.44%
FEDERAL EXPRESS	8,118	7,128	13.89%	8,118	7,128	13.89%
UNITED PARCEL SERVICE	27,746	23,171	19.74%	27,746	23,171	19.74%
MARTINAIRE	187	187	0.00%	187	187	0.00%
AIR CARGO CARRIERS	1,775	1,592	11.49%	1,775	1,592	11.49%
<b>Subtotal</b>	<b>39,326</b>	<b>32,874</b>	<b>19.63%</b>	<b>39,326</b>	<b>32,874</b>	<b>19.63%</b>
<b>Landed Weight Total</b>	<b>104,877</b>	<b>84,634</b>	<b>23.92%</b>	<b>104,877</b>	<b>84,634</b>	<b>23.92%</b>
<b>LANDINGS</b>						
AMERICAN EAGLE	428	427	0.23%	428	427	0.23%
UNITED EXPRESS	234	184	27.17%	234	184	27.17%
DELTA	269	244	10.25%	269	244	10.25%
VIA AIR	6	0	100.00%	6	0	100.00%
<b>Subtotal</b>	<b>937</b>	<b>855</b>	<b>9.59%</b>	<b>937</b>	<b>855</b>	<b>9.59%</b>
MOUNTAIN AIR CARGO	47	22	113.64%	47	22	113.64%
FEDERAL EXPRESS	41	36	13.89%	41	36	13.89%
UNITED PARCEL SERVICE	82	85	-3.53%	82	85	-3.53%
MARTINAIRE	22	22	0.00%	22	22	0.00%
AIR CARGO CARRIERS	68	61	11.48%	68	61	11.48%
<b>Subtotal</b>	<b>260</b>	<b>226</b>	<b>15.04%</b>	<b>260</b>	<b>226</b>	<b>15.04%</b>
<b>Landings Total</b>	<b>1,197</b>	<b>1,081</b>	<b>10.73%</b>	<b>1,197</b>	<b>1,081</b>	<b>10.73%</b>
<b>ENPLANED FREIGHT / CARGO</b>						
DELTA	6	5	20.00%	6	5	20.00%
MOUNTAIN AIR CARGO	89	68	30.88%	89	68	30.88%
FEDERAL EXPRESS	648	505	28.32%	648	505	28.32%
UNITED PARCEL SERVICE	2,100	1,700	23.53%	2,100	1,700	23.53%
MARTINAIRE	6	10	-40.00%	6	10	-40.00%
AIR CARGO CARRIERS	66	80	-17.50%	66	80	-17.50%
<b>Enplaned Cargo Total</b>	<b>2,915</b>	<b>2,368</b>	<b>23.10%</b>	<b>2,915</b>	<b>2,368</b>	<b>23.10%</b>



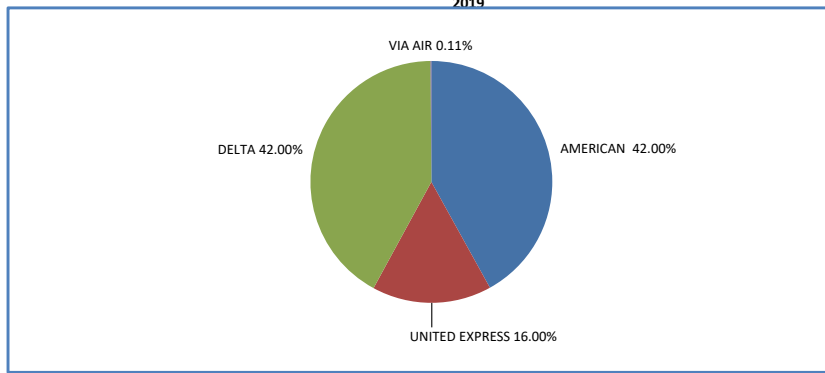
**MONTHLY TOTAL PASSENGERS  
2016 - 2019**



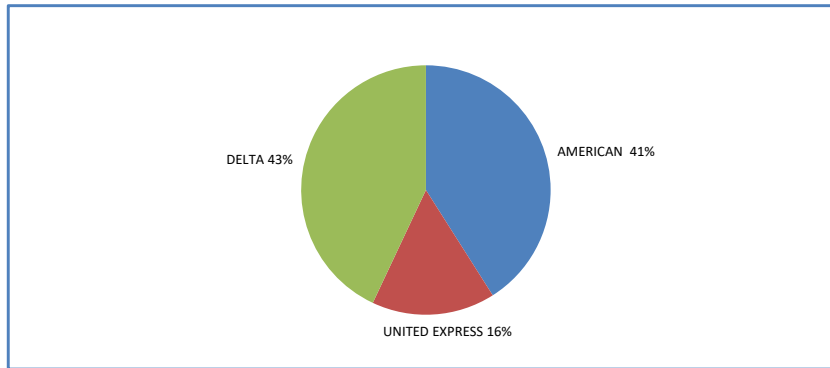
	Jan	Feb	Mar	Apr	May	Jun	Jul	Aug	Sep	Oct	Nov	Dec	Grand Total
2016	89,773	84,708	91,287	98,123	107,658	98,060	96,588	98,214	94,336	97,870	91,444	84,268	1,132,329
2017	80,220	77,410	93,946	82,905	92,892	89,533	96,902	97,701	84,799	104,000	93,983	82,897	1,077,188
2018	84,101	81,880	93,305	97,590	101,597	97,177	106,432	110,532	92,275	117,377	112,364	102,973	1,197,603
2019	96,756												96,756

**YEAR - TO - DATE MARKET SHARE BY CARRIER**

**2019**



**2018**



**2017**

