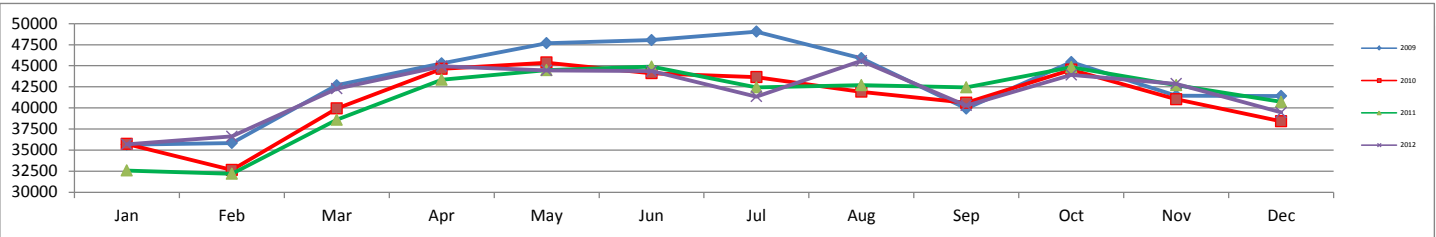




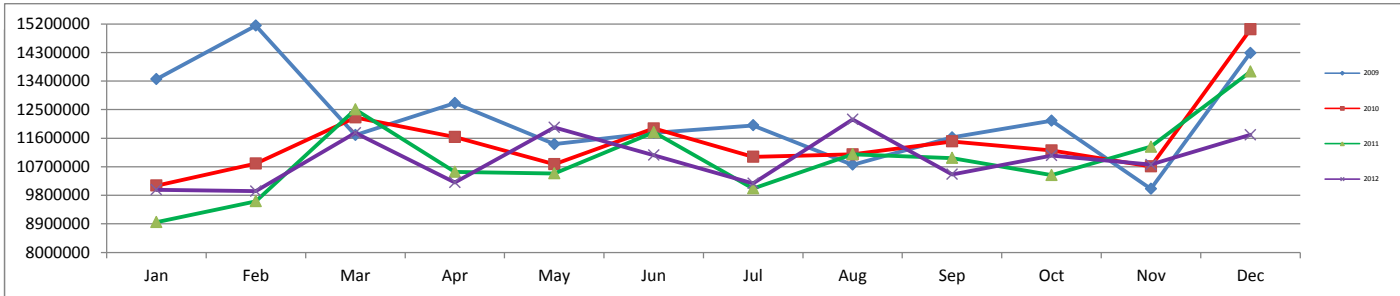
	Month			Year-to-Date		
	Dec-12	Dec-11	% Change	2012	2011	% Change
ENPLANED PASSENGERS						
AMERICAN EAGLE	3,136	3,423	-8.38%	39,847	40,476	-1.55%
UNITED EXPRESS	5,444	6,485	-16.05%	73,045	72,339	0.98%
CONTINENTAL	2,144	1,901	12.78%	13,584	21,017	-35.37%
DELTA	16,343	16,341	0.01%	221,780	212,361	4.44%
PIEDMONT / US AIRWAYS	12,114	12,423	-2.49%	151,190	142,922	5.78%
ALLEGiant	128	0	0.00%	1,127	546	106.41%
VISION AIR	150	150	0.00%	1,233	2,260	-45.44%
Enplaned Passenger Total	39,459	40,723	-3.10%	501,806	491,921	2.01%
LANDED WEIGHT (1,000 LB UNITS)						
AMERICAN EAGLE	3,459	3,798	-8.93%	44,156	44,820	-1.48%
UNITED EXPRESS	7,520	8,217	-8.48%	99,963	102,827	-2.79%
CONTINENTAL	2,758	1,926	43.20%	17,448	23,887	-26.96%
DELTA	20,493	19,911	2.92%	278,613	263,409	5.77%
PIEDMONT / US AIRWAYS	16,228	16,863	-3.77%	200,258	200,821	-0.28%
ALLEGiant	268	0	0.00%	2,758	648	325.62%
VISION AIR	248	124	200.00%	2,038	3,399	-40.04%
Subtotal	50,974	50,839	0.27%	645,234	639,811	0.85%
MOUNTAIN AIR CARGO	723	796	-9.17%	9,329	9,426	-1.03%
FEDERAL EXPRESS	10,054	7,970	26.15%	86,441	83,163	3.94%
UNITED PARCEL SERVICE	29,154	35,808	-18.58%	265,104	268,748	-1.36%
AMERIFLIGHT	0	0	0.00%	527	0	0.00%
WIGGINS AIRWAYS	0	533	-100.00%	1,625	3,198	-49.19%
MARTINAIRE	349	629	-44.52%	4,967	6,139	-19.09%
AIR CARGO CARRIERS	1,478	1,306	13.17%	14,472	11,497	25.88%
Subtotal	41,758	47,042	-11.23%	382,465	382,171	-40.85%
Landed Weight Total	92,732	97,881	-5.26%	1,027,699	1,021,982	0.56%
LANDINGS						
AMERICAN EAGLE	81	90	-10.00%	1,041	1,056	-1.42%
UNITED EXPRESS	160	178	-10.11%	2,136	2,207	-3.22%
CONTINENTAL	63	44	43.18%	399	552	-27.72%
DELTA	289	292	-1.03%	4,038	4,258	-5.17%
PIEDMONT / US AIRWAYS	357	372	-4.03%	4,392	4,474	-1.83%
ALLEGiant	2	0	0.00%	21	5	420.00%
VISION AIR	2	1	200.00%	16	36	-55.56%
Subtotal	954	977	-2.35%	12,043	12,588	-4.33%
MOUNTAIN AIR CARGO	20	22	-9.09%	258	262	-1.53%
FEDERAL EXPRESS	44	41	7.32%	372	477	-22.01%
UNITED PARCEL SERVICE	97	118	-17.80%	948	957	-0.94%
AMERIFLIGHT	0	0	0.00%	34	0	0.00%
WIGGINS AIRWAYS	0	41	-100.00%	125	246	-49.19%
MARTINAIRE	41	74	-44.59%	584	691	-15.48%
AIR CARGO CARRIERS	62	55	12.73%	602	508	18.50%
Subtotal	264	351	-24.79%	2,923	3,141	-6.94%
Landings Total	1,218	1,328	-8.28%	14,966	15,729	-4.85%
ENPLANED FREIGHT / CARGO						
DELTA	4	8	-50.00%	53	14	278.57%
MOUNTAIN AIR CARGO	52	65	-20.00%	645	595	8.40%
FEDERAL EXPRESS	663	657	0.91%	8,188	7,218	13.44%
UNITED PARCEL SERVICE	2,130	2,587	-17.67%	22,283	22,307	-0.11%
AMERIFLIGHT	0	0	0.00%	19	0	0.00%
WIGGINS AIRWAYS	0	33	-100.00%	117	234	-50.00%
MARTINAIRE	15	24	-37.50%	254	401	-36.66%
AIR CARGO CARRIERS	58	54	7.41%	706	684	3.22%
Enplaned Cargo Total	2,922	3,428	-14.76%	32,265	31,453	2.58%

**MONTHLY ENPLANED PASSENGERS
2009-2012**



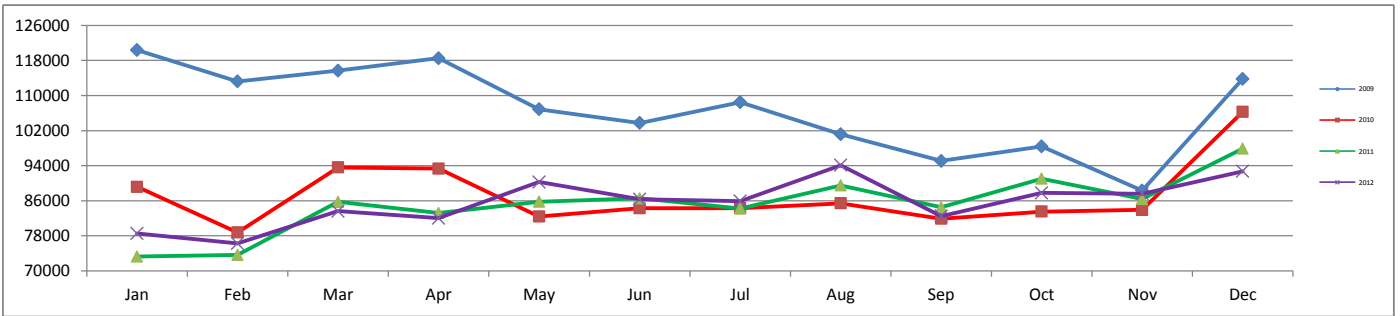
	Jan	Feb	Mar	Apr	May	Jun	Jul	Aug	Sep	Oct	Nov	Dec	Grand Total
2009	35,661	35,848	42,683	45,290	47,685	48,040	49,053	45,905	39,915	45,426	41,461	41,407	518,374
2010	35,739	32,645	39,942	44,627	45,370	44,112	43,647	41,920	40,611	44,536	41,033	38,416	492,598
2011	32,579	32,203	38,591	43,336	44,491	44,900	42,435	42,702	42,437	44,828	42,696	40,723	491,921
2012	35,690	36,618	42,290	44,931	44,462	44,358	41,347	45,589	40,292	43,899	42,871	39,459	501,806

**MONTHLY TOTAL CARGO
2009-2012**



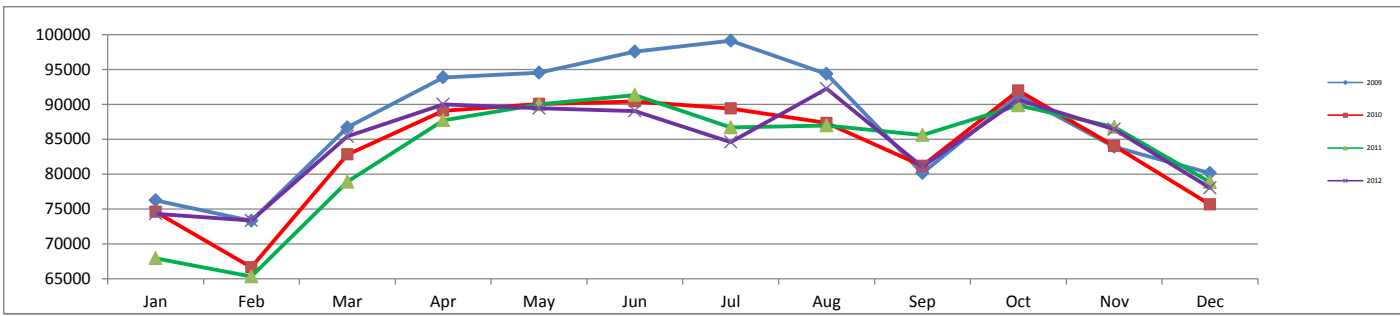
	Jan	Feb	Mar	Apr	May	Jun	Jul	Aug	Sep	Oct	Nov	Dec	Grand Total
2009	13,462,000	15,142,000	11,696,000	12,706,000	11,412,000	11,766,000	12,004,000	10,762,000	11,624,000	12,148,000	10,006,000	14,284,000	147,012,000
2010	10,108,000	10,796,000	12,252,000	11,634,000	10,780,000	11,906,000	11,010,000	11,090,000	11,498,000	11,212,000	10,712,000	15,026,000	138,024,000
2011	8,954,000	9,612,000	12,508,000	10,540,000	10,488,000	11,784,000	10,018,000	11,094,000	10,974,000	10,434,000	11,330,000	13,696,000	131,432,000
2012	9,974,000	9,930,000	11,766,000	10,204,000	11,938,000	11,064,000	10,176,000	12,194,000	10,460,000	11,056,000	10,768,000	11,704,000	131,234,000

**MONTHLY LANDED WEIGHT
2009-2012**



	Jan	Feb	Mar	Apr	May	Jun	Jul	Aug	Sep	Oct	Nov	Dec	Grand Total
2009	120,399	113,235	115,695	118,528	106,891	103,739	108,474	101,179	95,091	98,384	88,327	113,770	1,283,712
2010	89,186	78,781	93,615	93,351	82,421	84,311	84,275	85,426	81,931	83,530	83,922	106,308	1,047,057
2011	73,261	73,616	85,734	83,201	85,785	86,553	84,234	89,509	84,500	91,052	86,402	97,881	1,021,728
2012	78,544	76,255	83,616	82,018	90,270	86,327	85,913	94,119	82,513	87,790	87,602	92,732	1,027,699

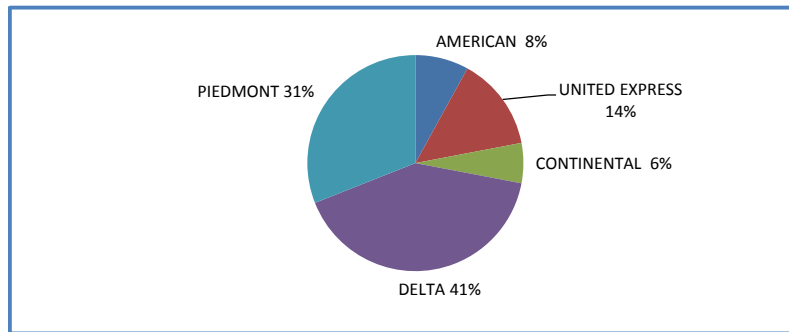
**MONTHLY TOTAL PASSENGERS
2009-2012**



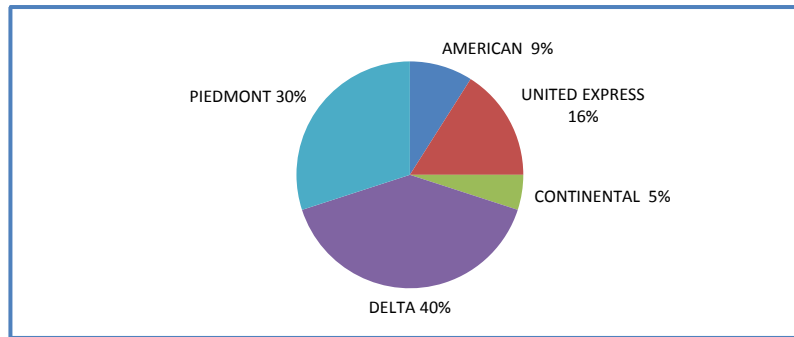
	Jan	Feb	Mar	Apr	May	Jun	Jul	Aug	Sep	Oct	Nov	Dec	Grand Total
2009	76,243	73,332	86,698	93,885	94,549	97,573	99,133	94,385	80,162	91,324	83,919	80,145	1,051,348
2010	74,617	66,644	82,824	89,112	90,075	90,440	89,422	87,345	81,195	91,979	84,058	75,664	1,003,375
2011	67,962	65,338	78,907	87,742	90,030	91,366	86,706	86,998	85,623	89,864	86,756	78,866	996,158
2012	74,334	73,358	85,435	90,032	89,456	89,075	84,604	92,248	81,045	90,678	86,441	78,043	1,014,749

YEAR - TO - DATE MARKET SHARE BY CARRIER

2012



2011



2010

